

Since 1985

انسوراب
Insuwrap

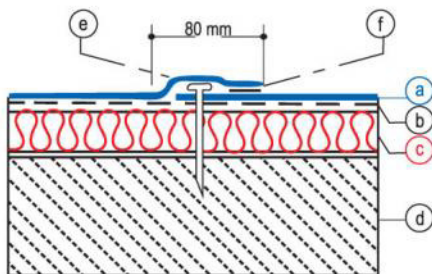
Insuwrap PVC 2000 Fleece Back-UV

PRODUCT DESCRIPTION :

Insuwrap PVC 2000 Fleece Back-UV is a calendered high polymer waterproofing membrane. The membrane is manufactured to the highest International standards offering high physical properties and long term durability. Insuwrap 2000 Fleece Back-UV is produced using the best raw materials produced by SABIC.

FIELD OF APPLICATION

- Exposed roofs, for new buildings & Re-roofing purposes



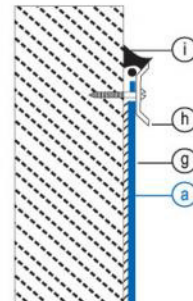
EXPOSED HORIZONTAL DETAIL
MECHANICALLY FIXED

METHOD OF APPLICATION

Insuwrap PVC waterproofing membrane are laid over the cleaned, smooth surface with 5 cm overlapping between rolls welded together using hot air welding machine.

For details, please refer to our installation guide.

- (a) - INSUWRAP PVC WATERPROOFING MEMBRANE (2000 FLEECE BACK-UV) ULTRA VIOLET RESISTANT
- (b) - SEPARATION LAYER
- (c) - THERMAL INSULATION
- (d) - CONCRETE DECK
- (e) - SCREW & WASHER FOR MECHANICAL FIXATION
- (f) - HOT AIR WELDING
- (g) - CONTACT ADHESIVE
- (h) - ALUMINIUM FLASHING
- (i) - SEALANT



VERTICAL PARAPET DETAIL

OUT STANDING FEATURES :

- * Easy to apply using hot air welding for joints.
- * Resistant to high temperature fluctuations.
- * Remain flexible throughout its life span and could be easily joined to new material after installation.
- * High resistance to fire.
- * Resistance to extreme weather conditions and UV Rays.

STORAGE :

Rolls should be stacked horizontally and parallel to each other on a smooth surface.



Insuwrap PVC 2000 Fleece Back-UV

2.0mm thick, color white, to be used for Exposed Roofing System

MATERIAL PROPERTIES

Test	ASTM (D 4434) Standard & Requirements (Results,)	INS.PVC 2000 Fleece Back- UV
Overall Thickness of PVC sheet, min, mm	2.0	2.0
Mass (Kg / m ²) Membrane only		2.65
Membrane & Fleece Back		2.80
Tensile strength of break, min MPa (Psi):		
Machine -direction	10.4 (1500)	>15.5
Cross-machine direction	10.4 (1500)	>15.5
Elongation at break, min,%		
Machine Direction	250	>300
Cross-machine direction	250	>300
Seam strength, min,% of tensile or breaking strength	75	>90
Retention of properties after heat aging:		
Tensile strength,min,% of original	90	>90
Elongation,min,% of original	90	>90
Tear Resistance. Min,N (bf)	45.0 (10.0)	>100
Low temperature bend	Pass	Pass
Accelerated weathering test:		
Cracking (7 x magnification)	None	None
Crazing (7 x magnification)	None	None
Linear dimensional change, max, %	0.1	<0.05
Change in weight after immersion in water, max,%	± 3.0	>± 1.0
Static Puncture Resistance	Pass	Pass
Dynamic Puncture Resistance	Pass	Pass
Fire Class	ASTM E108	Pass (Class B)

ROLL DIMENSIONS:

Roll length	20.0m
Roll width	2.1m
Weight / Roll(approx)	118.0 kg

A Member of **far** & Sons Group
Waterproofing and Wrapping
Products Co. Ltd.

P.O. Box : 17579
 Riyadh : 11494, Saudi Arabia

Tel. : (00966 11) 4980332 Fax : (00966 11) 4980655
 Branches : Al-Khobar Tel./Fax : 013 858 7607
 Jeddah : Tel. : 012 635 8195 Fax : 012 637 0208
 E-Mail : sales@insuwrap.com, www.insuwrap.com