

Since 1985

## **Scope Of Work**

### **Sloping Screed**

*Sloping screed will be applied over concrete deck. The screed can be sand cement or lightweight concrete.*

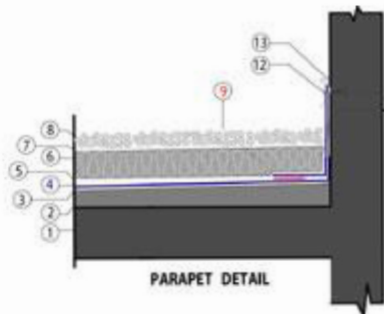
### **Separation layer (optional)**

*A separation layer of polyethylene (minimum 100 mic.) will be applied if the concrete surface is not smooth enough to receive PVC waterproofing membranes.*

### **Horizontal Surface**

*PVC membranes (1500 WMR) 1.5 mm thick will be loose laid on the horizontal surface and extended to vertical up-stands up to minimum of 30mm.*

*The overlaps of PVC membranes should be a minimum of 50 mm welded with hot air guns. As much as practically possible the joints will not be against the direction of flow.*



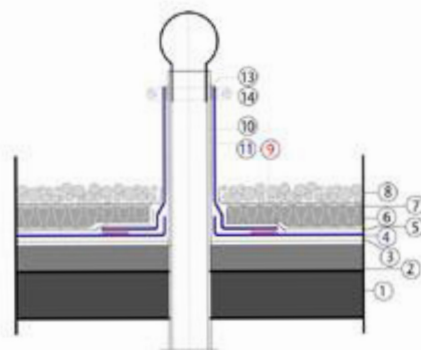
*these critical points of the roofs.*

### **Up-stands**

*Ultra violet resistant reinforced membrane 1500 WMR-UV (1.5mm thick) will be bonded to up-stands using insurbond-106 contact adhesive or equivalent and terminated with aluminum flashing and sealant.*

### **Corners**

*Additional round piece of PVC membrane will be welded by hot air guns to all outside corners to double reinforce*



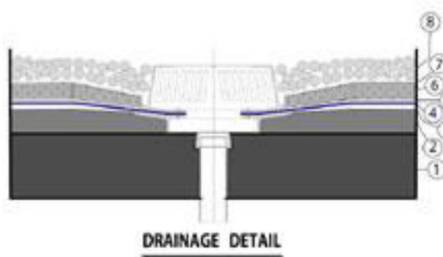
### **Pipes**

*The dressing of pipes will be by using Insurbond-106 contact adhesive or equivalent for gluing the ultra violet resistant PVC waterproofing membrane to the pipe, which penetrates the roof deck. Top termination will be by using metal clamp and sealant. The finishing line of the membrane and the clamp will be kept at least 100 mm above the finished level of roof.*

*Since 1985*

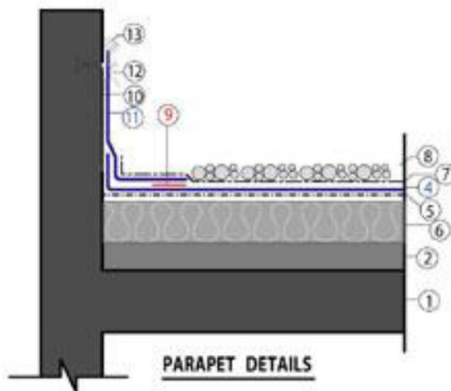
## Roof Drains

The dressing of drains will be done properly. The membrane will be installed to few centimeters inside the drain pipe



### Water test

After installation of waterproofing membranes the roof will be flooded with water for a minimum of 24 hours. In case of any leakage the source of leakage will be determined, water will be drained and repair works will be carried out in the affected area. As per requirements water test will be repeated on full roof or part of it.



### Thermal Insulation

Rigid thermal insulation to be applied according to requirements of the client.

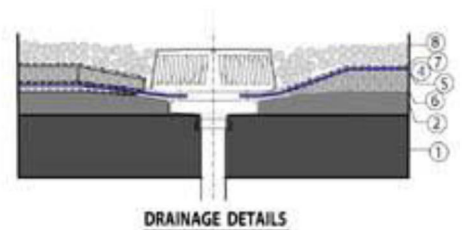
### Protection layer

Protection layer will be Polypropylene non-woven, weighing a minimum of 140 gm/m<sup>2</sup>

## Finishing layer

Finishing layer can be one of the following types according to client requirements and roof purpose:

- Spread gravel all over the roof (50-mm thick).
- Gravel 50mm thick with walkways made of precast concrete tile
- Loose laid tiles (Tiles will be terminated 15cm before all up-stands). This gap of 15cm will be filled with gravel.
- Tiles on mortar bed.

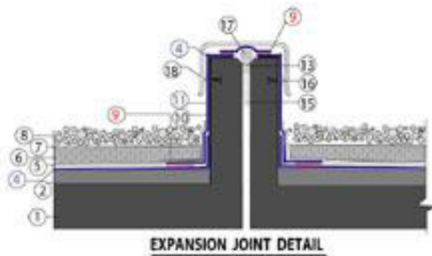


Since 1985

### CONVENTIONAL SYSTEM

*INSUWRAP PVC waterproofing membranes can be applied above thermal insulation according to client requirements (Conventional system).*

*PVC waterproofing system is very successful in reroofing cases, since it can be applied above thermal insulation or existing tiles without the need of removal of under layers.*



### DRAWING KEY

- 1- Concrete Roof Deck
- 2- Foam Concrete or Light weight
- 3- Concrete laid to falls
- 4- 150 mic polyethylene separation layer
- 5- Insuwrap PVC 1500 WMR, 1.5mm thick, reinforced with high tenacity polyester mesh.
- 6- 150 mic polyethylene Separation layer
- 7- Thermal Insulation (50mm thick)
- 8- Geotextile protection layer 140gm / m<sup>2</sup>
- 9- Gravel bed (50 mm thick)
- 10- Hot Air Welding
- 11- Insur bond 106 contact adhesive or equivalent
- 12- Insuwrap PVC 1500 WMR - UV, 1.5 mm thick , reinforced with high tenacity polyester mesh, Ultra Violet resistant.
- 13- Aluminum Flashing
- 14- Sealant
- 15- Metal Clamp
- 16- Fiber board
- 17- Aluminum Holding strip
- 18- Backing Rod
- 19- Aluminum Caping