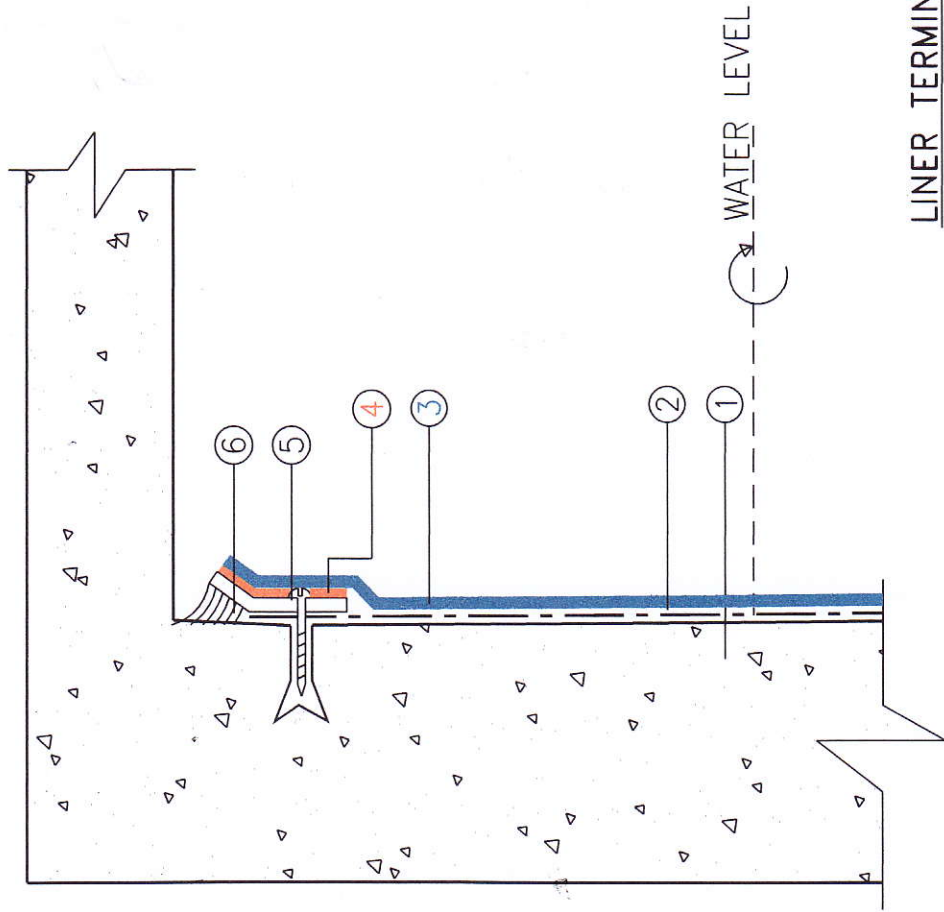


Insuwrap

WATER TANK
SECTION
DETAIL



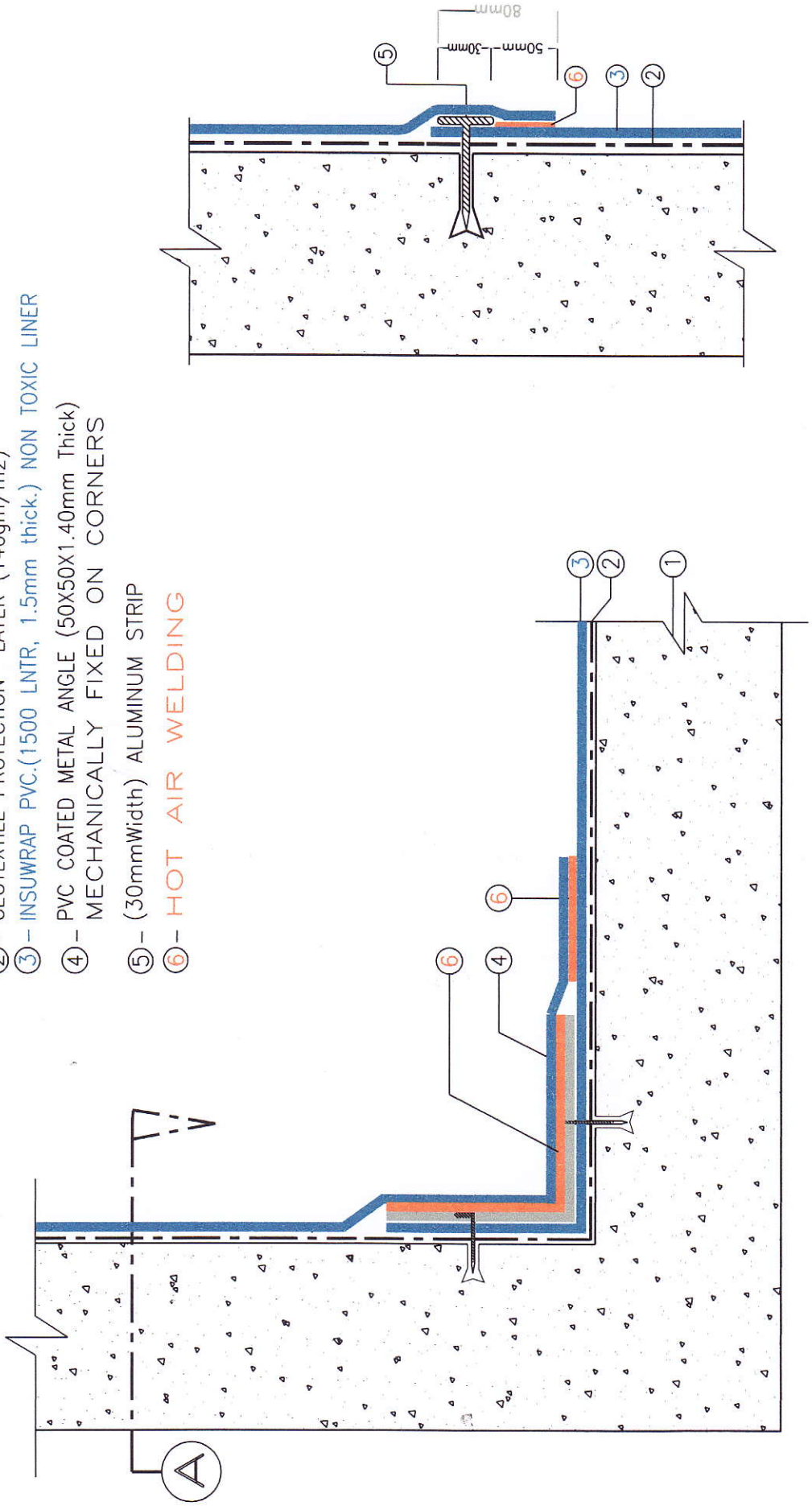
- ① - REINFORCED CONCRETE WATER TANK SHELL
- ② - GEOTEXTILE PROTECTION LAYER (140gm/m²)
- ③ - INSUWRAP PVC.(1500 LNR 1.5mm Thick) NON TOXIC LINER
- ④ - HOT AIR WELDING
- ⑤ - (50mm width -1.40mm thick) PVC. COATED METAL FLASHING MECHANICALLY FIXED
- ⑥ - NON-TOXIC SEALANT

LINER TERMINATION DETAIL

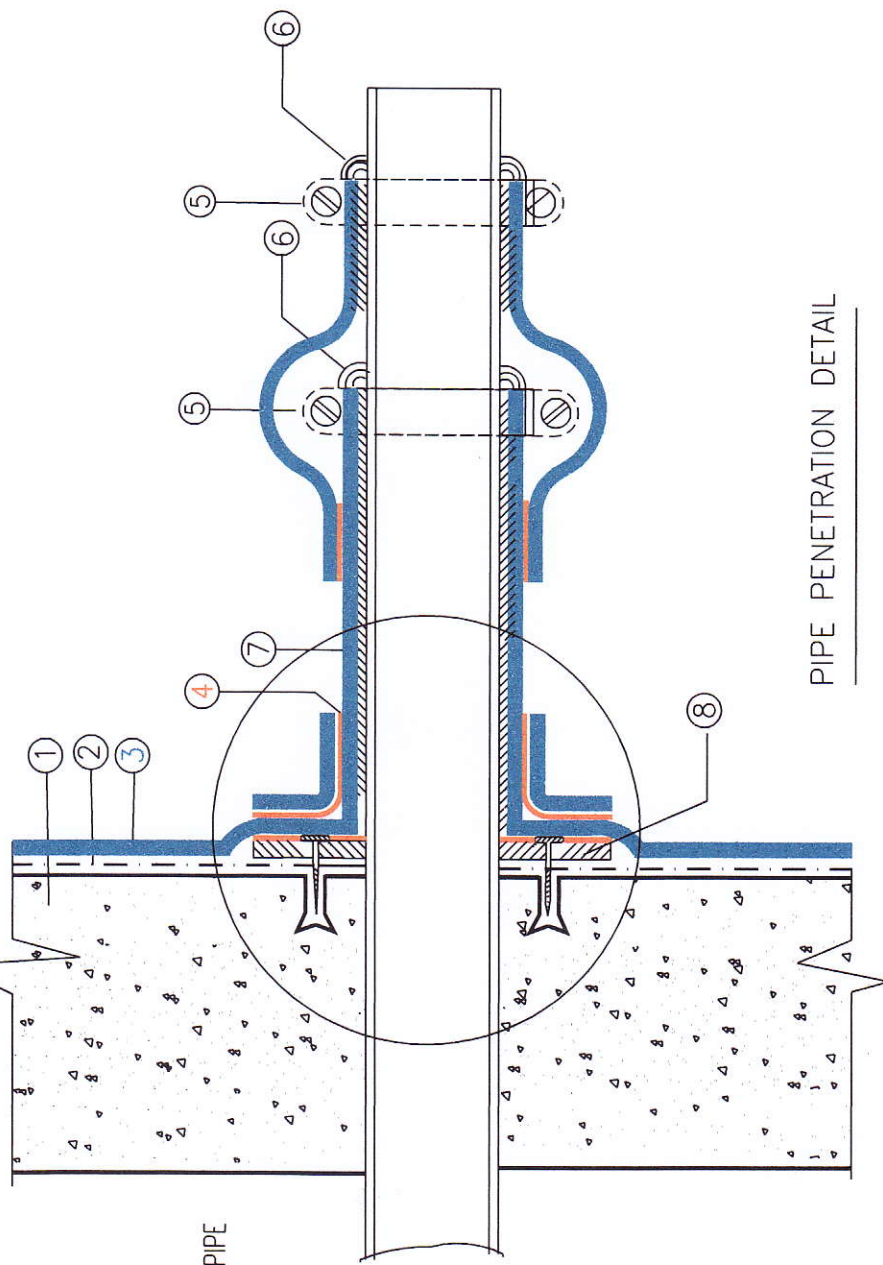
Insuwrap

WATER TANK SECTION DETAIL

- ① - REINFORCED CONCRETE WATER TANK SHELL
- ② - GEOTEXTILE PROTECTION LAYER (140gm/m²)
- ③ - INSUWRAP PVC.(1500 LNTR, 1.5mm thick.) NON TOXIC LINER
- ④ - PVC COATED METAL ANGLE (50X50X1.40mm Thick) MECHANICALLY FIXED ON CORNERS
- ⑤ - (30mmWidth) ALUMINUM STRIP
- ⑥ - **HOT AIR WELDING**



- ① - REINFORCED CONCRETE WATER TANK, SHELL
- ② - GEOTEXTILE PROTECTION LAYER (140gm/m²)
- ③ - INSUWRAP PVC.(1500 LNTR 1.5mmThick) LINER NON TOXIC
- ④ - **HOT AIR WELDING**
- ⑤ - METAL CLAMP
- ⑥ - NON TOXIC SEALANT
- ⑦ - CONTACT ADHESIVE
- ⑧ - PVC. COATED METAL PLATE FIXED AROUND THE PIPE



PIPE PENETRATION DETAIL