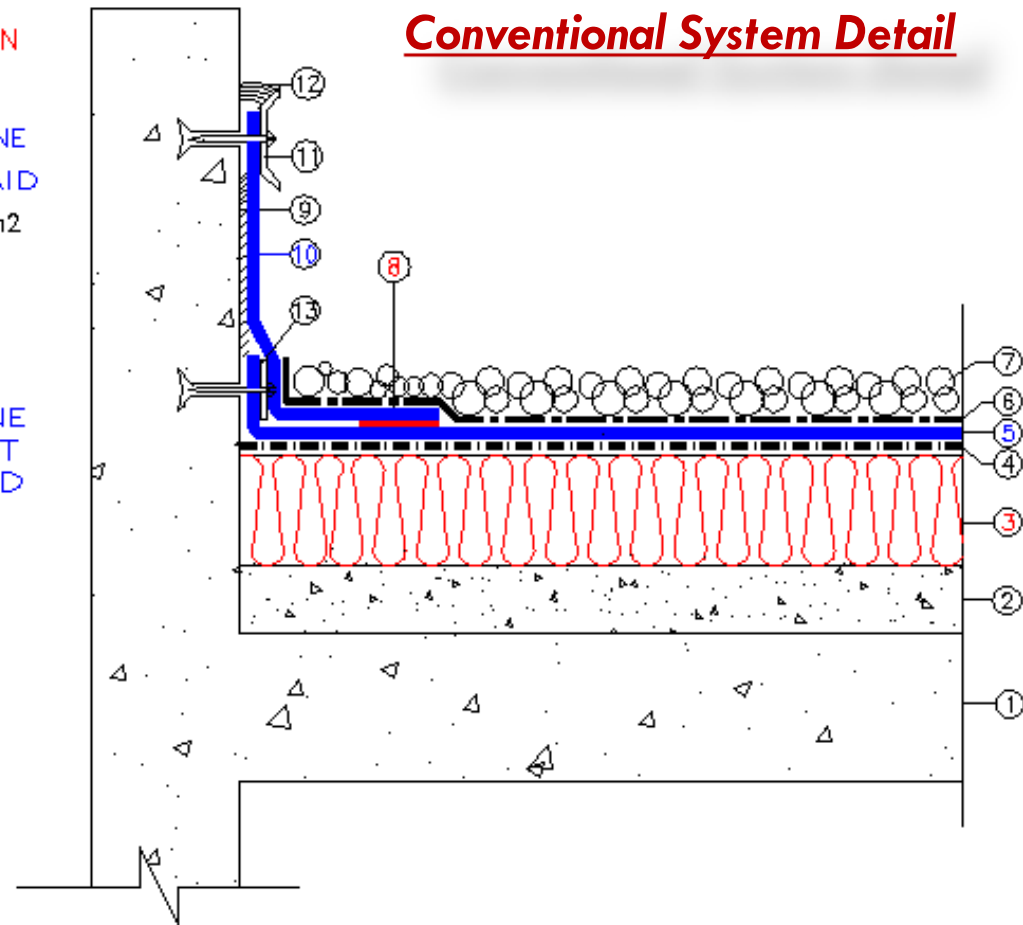


- ①- CONCRETE ROOF DECK
- ②- SCREED TO SLOPE
- ③- 10cm EXTRUDED POLYSTYRENE THERMAL INSULATION
- ④- POLYETHYLENE SEPARATION LAYER 150mic.
- ⑤- INSUWRAP PVC 1500WMR-UV WATERPROOFING MEMBRANE
UV RESISTANT, REINFORCED, LOOSE LAID
- ⑥- PROTECTION LAYER, NON WOVEN GEOTEXTILE ALYAF 260gm/m2
- ⑦- GRAVEL
- ⑧- HOT AIR WELDING
- ⑨- CONTACT ADHESIVE
- ⑩- PVC(1500WMR-UV) WATERPROOFING MEMBRANE
REINFORCED & ULTRA VIOLET RESISTANT
FULLY BONDED TO THE UP-STAND
- ⑪- ALUMINUM FLASHING
- ⑫- SEALANT
- ⑬- HOLDING STRIP

Conventional System Detail



Note: This sketch is for illustration only and not to scale