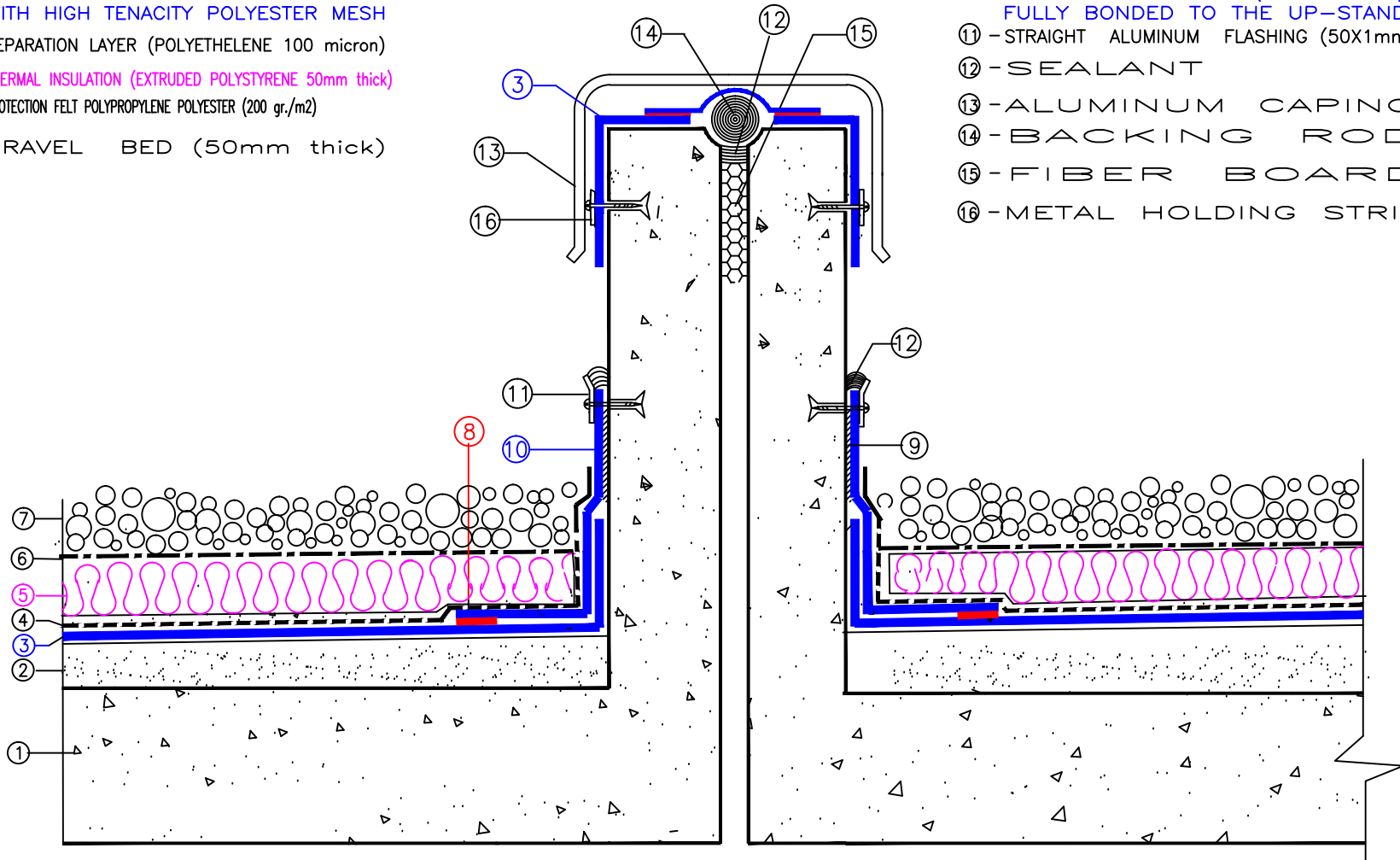


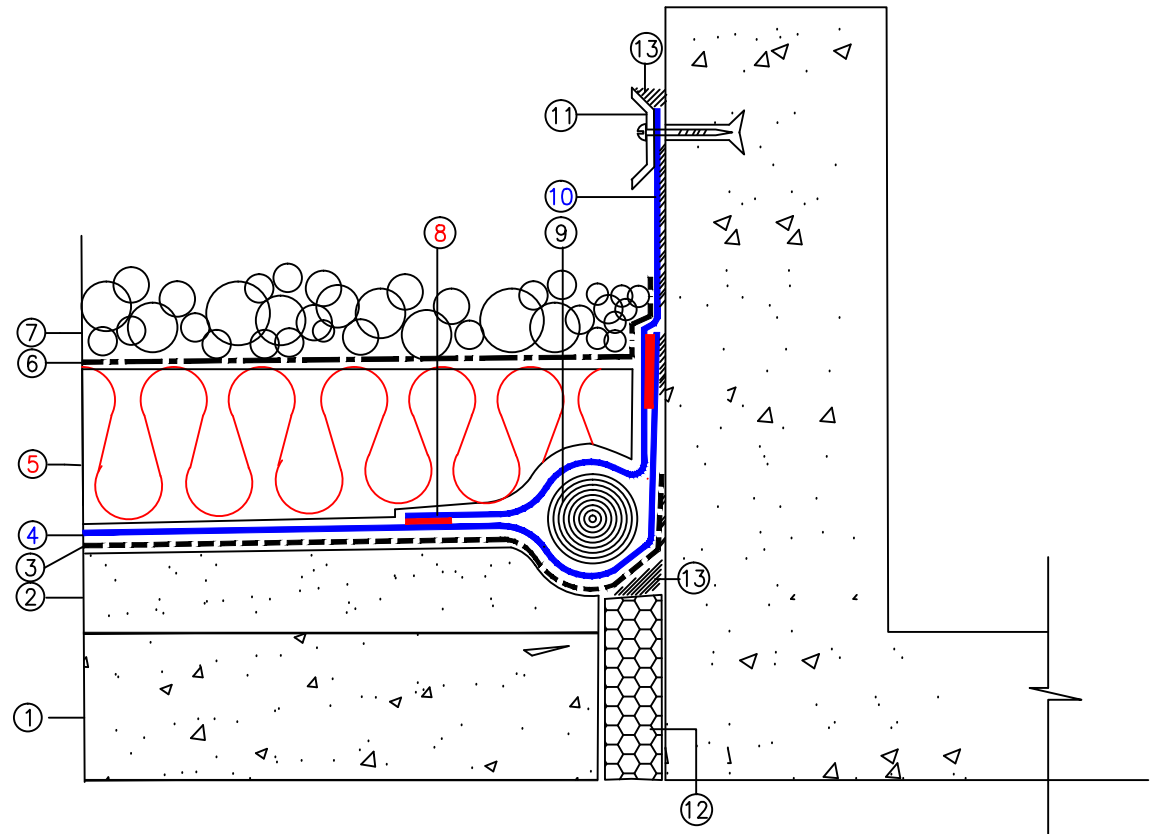
- ① - PR-CAST HOLLOW CORE CONCRETE DECK
- ② - LIGHT WEIGHT FOAM CONCRETE LAID TO FALLS
- ③ - SINGLE PLY HIGH POLYMERIC PVC. WATERPROOFING MEMBRANE (TYPE INSURWRAP 1200 WMR-1.20mm thick ) REINFORCED WITH HIGH TENACITY POLYESTER MESH
- ④ - SEPARATION LAYER (POLYETHELENE 100 micron)
- ⑤ - THERMAL INSULATION (EXTRUDED POLYSTYRENE 50mm thick)
- ⑥ - PROTECTION FELT POLYPROPYLENE POLYESTER (200 gr./m2)
- ⑦ - GRAVEL BED (50mm thick)

- ⑧ - HOT AIR WELDING
- ⑨ - INSURBOND 106 CONTACT ADHESIVE
- ⑩ - PVC. WATERPROOFING REINFORCED MEMBRANE ULTRA VIOLET RESISTANT (1.20mm thick) FULLY BONDED TO THE UP-STAND
- ⑪ - STRAIGHT ALUMINUM FLASHING (50X1mm)
- ⑫ - SEALANT
- ⑬ - ALUMINUM CAPING
- ⑭ - BACKING ROD
- ⑮ - FIBER BOARD
- ⑯ - METAL HOLDING STRIP



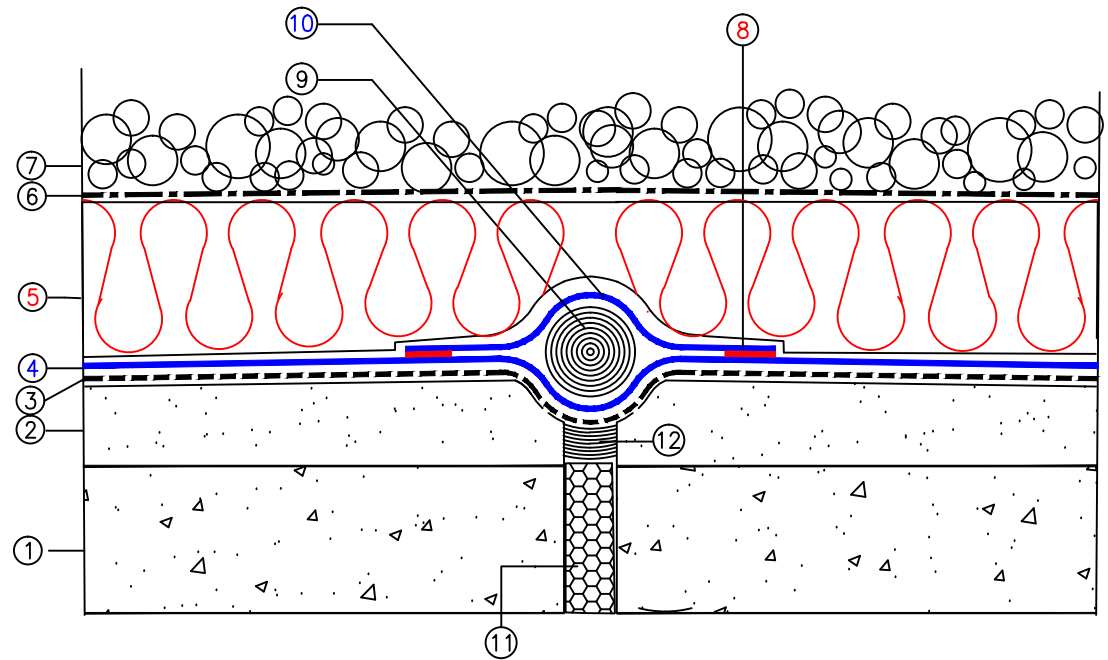
PARAPET DETAIL

- ① - CONCRETE SLAB
- ② - LIGHT WEIGHT CONCRETE
- ③ - INSUWRAP PVC VAPOR BARRIER (thick. 250mic)
- ④ - INSUWRAP PVC. WATERPROOFING REINFORCED MEMBRANE (1200WMR) 1.20mm thick, LOOSELY LAID
- ⑤ - RIGID THERMAL INSULATION (50mm thick)
- ⑥ - PROTECTION LAYER
- ⑦ - LOOSE GRAVEL
- ⑧ - HOT AIR WELDING
- ⑨ - BACKING ROD (DIM 50mm EXPANDED POLYETHELENE)
- ⑩ - INSUWRAP PVC. WATERPROOFING MEMBRANE REINFORCED ULTRA VIOLET RESISTANT (1200WMR-UV)
- ⑪ - ALUMINUM FLASHING
- ⑫ - FIBER BOARD
- ⑬ - SEALANT



EXPANSION JOINT DETAIL

- ① - CONCRETE SLAB
- ② - LIGHT WEIGHT CONCRETE
- ③ - INSUWRAP PVC VAPOR BARRIER (thick. 250mic)
- ④ - INSUWRAP PVC. WATERPROOFING REINFORCED MEMBRANE (1200WMR) 1.20mm thick, LOOSELY LAID
- ⑤ - RIGID THERMAL INSULATION (50mm thick)
- ⑥ - PROTECTION LAYER
- ⑦ - LOOSE GRAVEL
- ⑧ - HOT AIR WELDING
- ⑨ - BACKING ROD (DIM 50mm EXPANDED POLYETHELENE)
- ⑩ - INSUWRAP PVC. WATERPROOFING REINFORCED MEMBRANE PIECE (200mm Width,1.20mm thick) WELDED TO THE ENTIRE LAYER
- ⑪ - FIBER BOARD
- ⑫ - SEALANT



EXPANSION JOINT DETAIL

TITLE OF DRAWING:

DETAIL BY: **Insuwrap**

EXPANSION JOINT DETAIL

- ① - CONCRETE ROOF DECK
- ② - CEMENT SAND SCREED OR FOAM CONCRETE TO SLOPE
- ③ - 50mm EXTRUDED POLYSTYRENE THERMAL INSULATION
- ④ - SEPARATION LAYER ( POLYETHYLENE 200micron)
- ⑤ - INSUWRAP PVC 1200WMR WATERPROOFING MEMBRANE REINFORCED, LOOSE LAID
- ⑥ - PROTECTION LAYER, NON WOVEN GEOTEXTILE (200gm/m<sup>2</sup>) ALYAF
- ⑦ - TILES 300 X 300 X 30 mm
- ⑧ - HOT AIR WELDING

- ⑨ - CONTACT ADHESIVE
- ⑩ - REINFORCED & ULTRA VIOLET RESISTANT FULLY BONDED TO THE UP-STAND
- ⑪ - BACKING ROD (Diameter 50mm)
- ⑫ - FIBER BOARD
- ⑬ - POLYURETHANE SEALANT
- ⑭ - INSUWRAP PVC 1200WMR-UV WATERPROOFING MEMBRANE (EXTRA PIECE)
- ⑮ - ALUMINUM HOLDING STRIP (30X1mm, 250mm SPACING)

