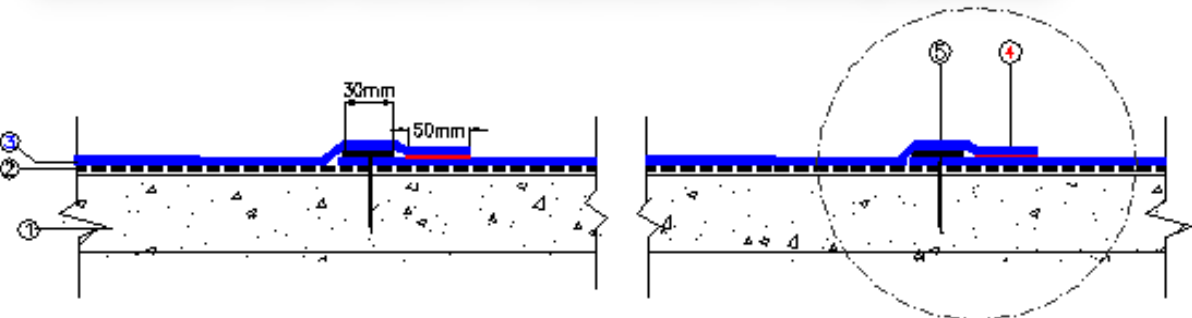
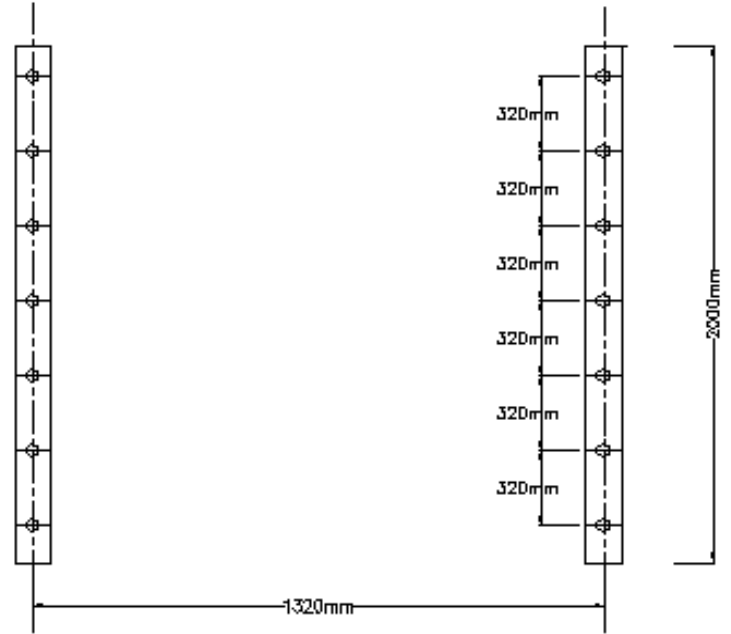


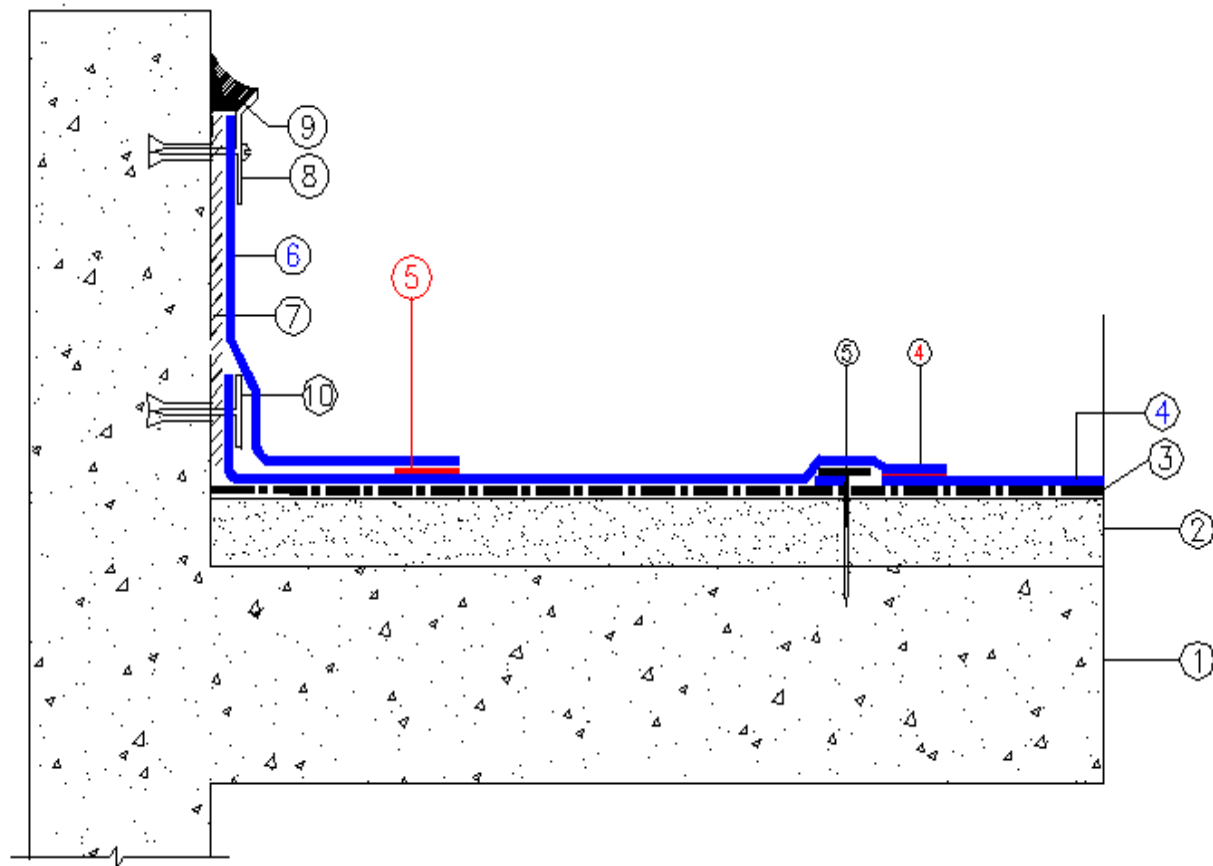
Exposed Roofing System
(Concrete roof detail – mechanical fixing system)



- ①- CONCRETE DECK
- ②- PROTECTION LAYER (ALYAF GEOTEXTILE)
- NEW INSUWRAP PVC WATERPROOFING MEMBRANE
- ③- (1500 WMR-UV) MECHANICALLY FIXED BY ALUMINUM STRIPS REINFORCED, ULTRA VIOLET RESISTANT
- ④- HOT AIR WELDING
- 2000 mm LONG ALUMINUM STRIP INSTALLED AT 1320mm C/C
- ⑤- FIXED WITH FASTENERS AT EACH END & 5 FASTENERS IN BETWEEN, TOTAL 7 FASTENERS PER BAR



- ①- ROOF DECK
- ②- SCREED LAID TO SLOPE
- ③- NON-WOVEN, GEOTEXTILE SEPARATION LAYER (300gm/sq.m)
- ④- NEW INSUWRAP PVC WATERPROOFING MEMBRANE (1500 WMR-UV) MECHANICALLY FIXED BY ALUMINUM STRIPS REINFORCED, ULTRA VIOLET RESISTANT
- ⑤- HOT AIR WELDING
- ⑥- INSUWRAP PVC. WATERPROOFING (1500WMR-UV) FULLY BONDED REINFORCED, ULTRA VIOLET RESISTANT
- ⑦- CONTACT ADHESIVE
- ⑧- ALUMINUM FLASHING
- ⑨- SEALANT
- ⑩- ALUMINUM HOLDING STRIP



Exposed Roofing System

(Concrete roof detail – mechanical fixing system)