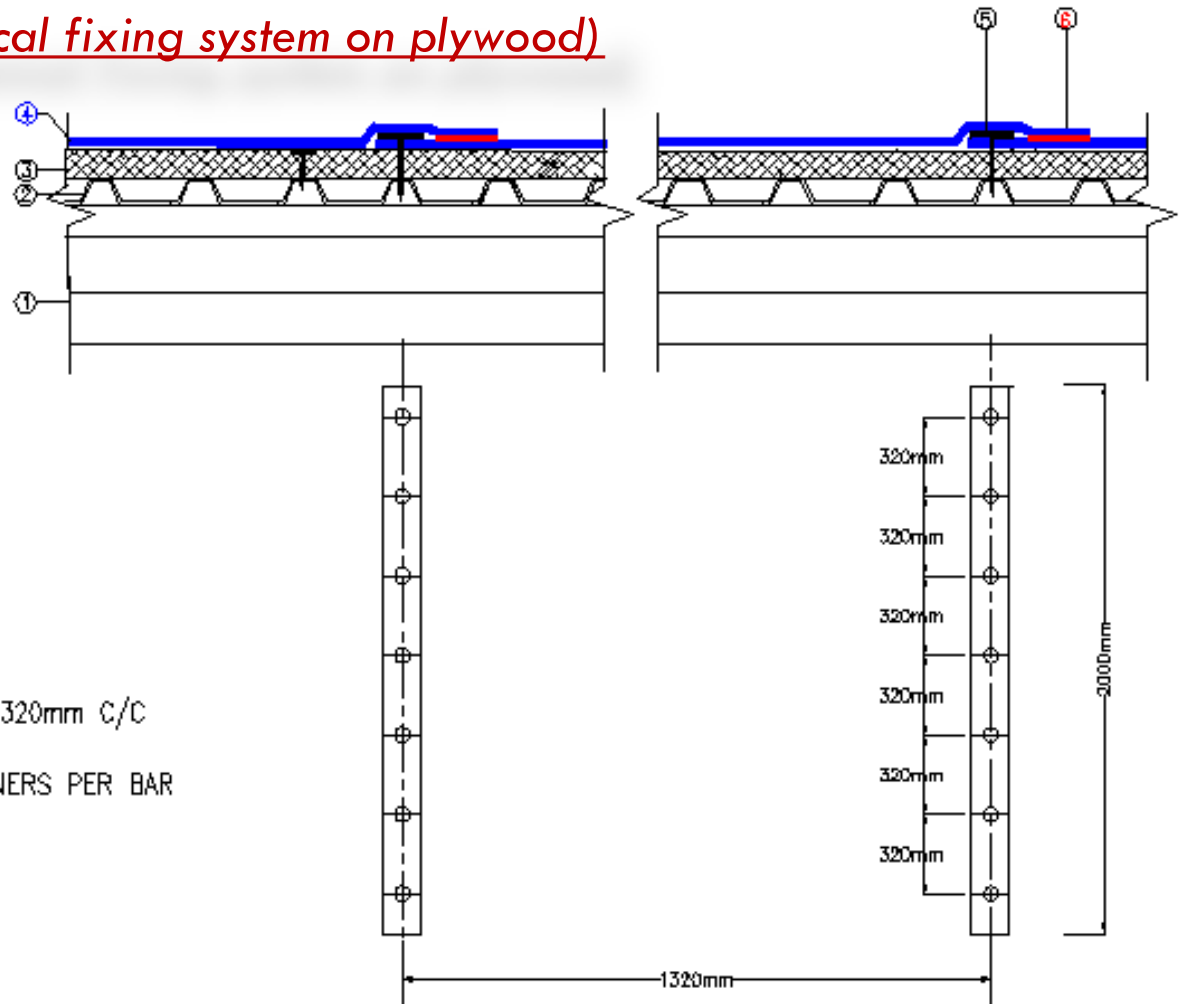


Exposed Roofing System

(Metal roof detail – mechanical fixing system on plywood)



① - MAIN STEEL FRAME

② - CORRUGATED METAL SHEET

③ - PLYWOOD 9mm thickness,
MECHANICALLY FIXED

④ - INSUWRAP PVC WATERPROOFING
MEMBRANE 1500WMR UV"
MECHANICALLY FIXED

2000 mm LONG BATTEN BAR INSTALLED AT 1320mm C/C

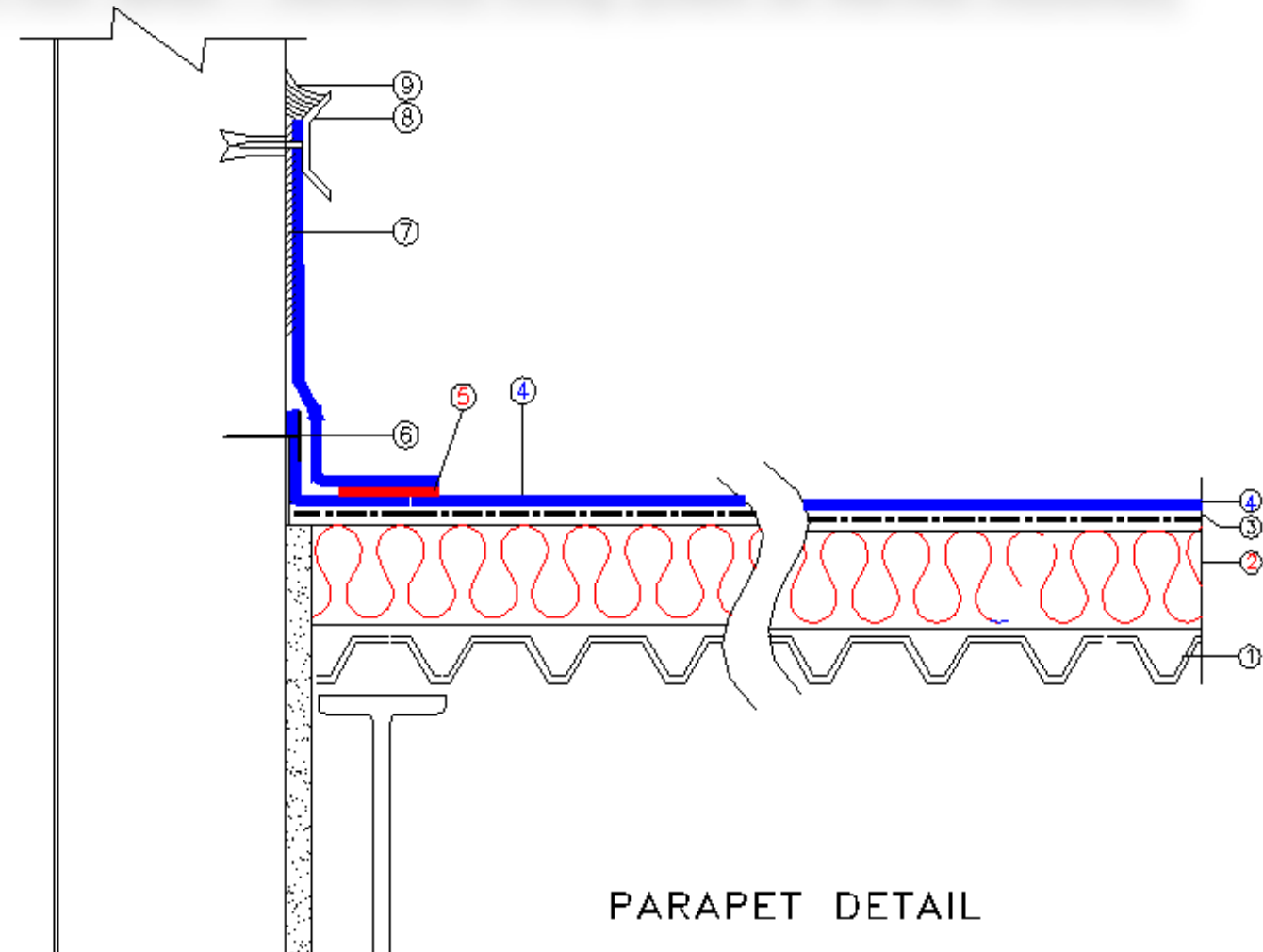
⑤ - FIXED WITH FASTENERS AT EACH END &
5 FASTENERS IN BETWEEN, TOTAL 7 FASTENERS PER BAR

⑥ - HOT AIR WELDING

Exposed Roofing System

(Metal roof detail – mechanical fixing system on thermal insulation)

- ① - CORRUGATED METAL SHEET
- ② - EXTRUDED POLYSTYRENE
THERMAL INSULATION 70mm thick.
MECHANICALLY FIXED
- ③ - GEOTEXTILE SEPARATION LAYER 300gm/m²
- ④ - INSUWRAP PVC WATERPROOFING
MEMBRANE 2000DWMR UV
MECHANICALLY FIXED
- ⑤ - HOT AIR WELDING
- ⑥ - ALUMINUM HOLDING STRIP
- ⑦ - CONTACT ADHESIVE
- ⑧ - ALUMINUM FLASHING
- ⑨ - SEALANT



Exposed Roofing System

(Metal roof detail – Gutter dressing detail)

- ① – MAIN STEEL FRAME
- ② – CORRUGATED METAL SHEET
- ③ – PLYWOOD, 9mm thickness
MECHANICALLY FIXED
- ④ – INSUWRAP PVC WATERPROOFING
MEMBRANE "1500WMR UV"
MECHANICALLY FIXED
- ⑤ – PVC COATED METAL ANGLE
- ⑥ – HOT AIR WELDING
- ⑦ – METAL GUTTER
- ⑧ – INSUWRAP PVC WATERPROOFING
MEMBRANE "1500WMR UV" FULLY BONDED
- ⑨ – ALUMINUM FLASHING
- ⑩ – CONTACT ADHESIVE
- ⑪ – SEALANT

