

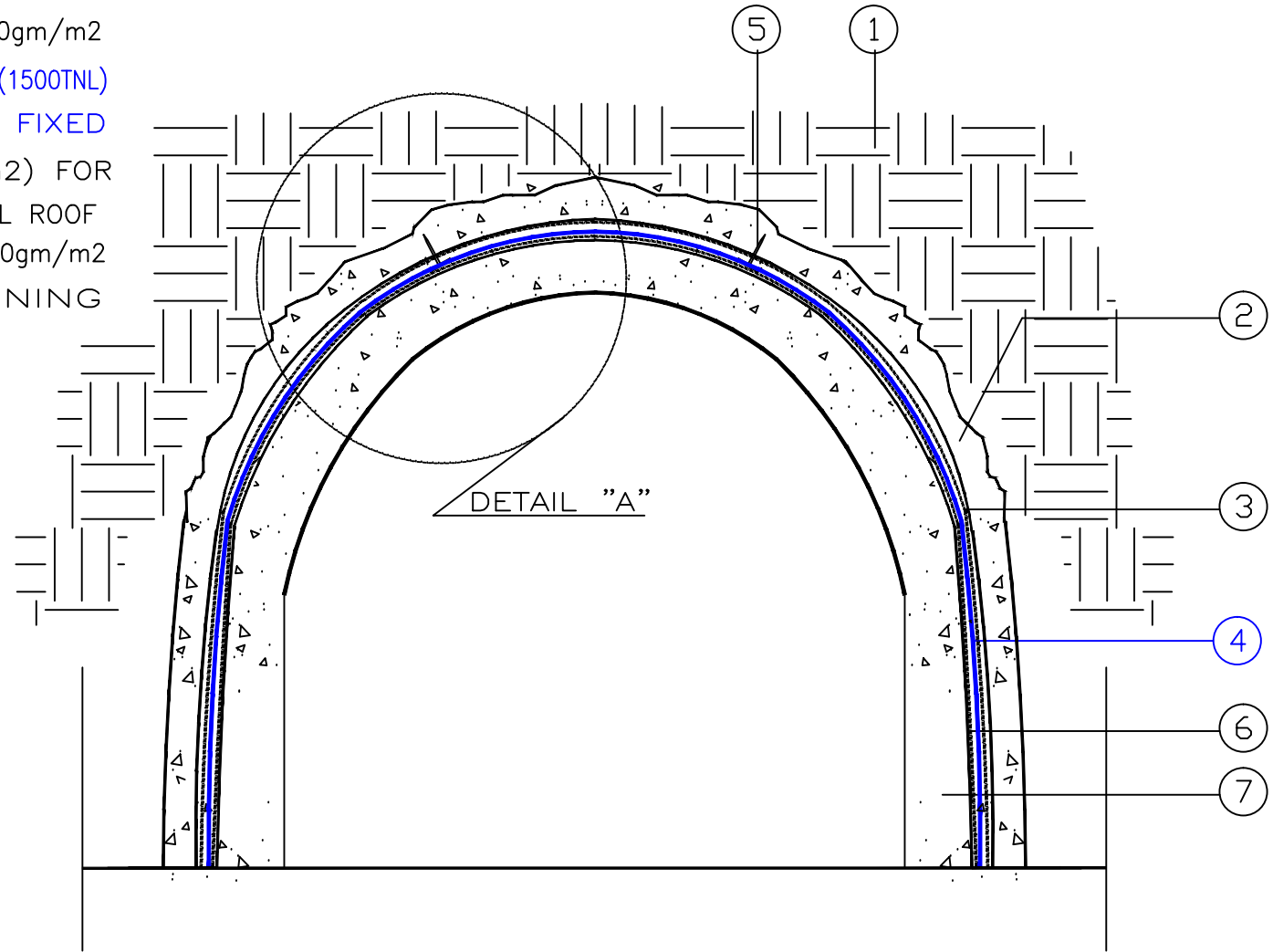
PROJECT:

INSUWRAP PVC WATERPROOFING SYSTEM
FOR TUNNEL LINING

Drawing No.: 1/2

NOT TO SCALE

- ① - ROCK BED
- ② - SPRAYED CONCRETE SUPPORT
- ③ - ALYAF GEOTEXTILE PROTECTION LAYER 400gm/m²
- ④ - INSUWRAP P.V.C WATERPROOFING MEMBRANE (1500TNL)
1.5mm Thick., MECHANICALLY FIXED
- ⑤ - PVC COATED METAL DISKS, (2/m²) FOR
TUNNEL SIDES & (3/m²) FOR TUNNEL ROOF
- ⑥ - ALYAF GEOTEXTILE PROTECTION LAYER 400gm/m²
- ⑦ - INTERNAL CONCRETE LINING



PROJECT:

INSUWRAP PVC WATERPROOFING SYSTEM
FOR TUNNEL LINING

Drawing No.: 2/2

NOT TO SCALE

- ①- ROCK BED
- ②- SPRAYED CONCRETE SUPPORT
- ③- ALYAF GEOTEXTILE PROTECTION LAYER 400gm/m²
- ④- INSUWRAP P.V.C WATERPROOFING MEMBRANE (1500TNL)
1.5mm Thick., MECHANICALLY FIXED
- ⑤- PVC COATED METAL DISKS, (2/m²) FOR
TUNNEL SIDES & (3/m²) FOR TUNNEL ROOF
- ⑥- HOT AIR WELDING (50mm)
- ⑦- ALYAF GEOTEXTILE PROTECTION LAYER 400gm/m²
- ⑧- INTERNAL CONCRETE LINING

