

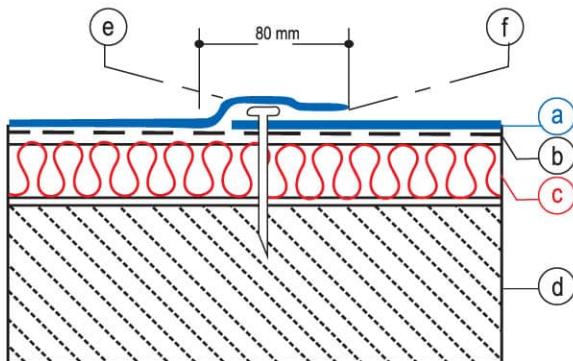
Insuwrap PVC 1600 UV "S"

PRODUCT DESCRIPTION :

Insuwrap PVC 1600 UV "S" is a calendered high polymer waterproofing membrane, UV stabilized. The membrane is manufactured to the highest International standards offering high physical properties and long term durability. Insuwrap 1600 UV "S" is produced using the best raw materials produced by SABIC.

FIELD OF APPLICATION

- Exposed roofs, for new building & Re-roofing purposes.



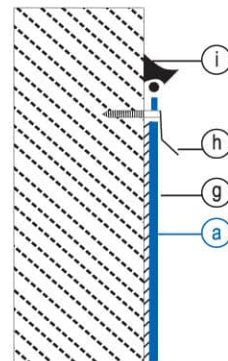
**EXPOSED HORIZONTAL DETAIL
MECHANICALLY FIXED**

METHOD OF APPLICATION

Insuwrap PVC waterproofing membranes are loosely laid over the cleaned, smooth surface with 5 cm overlapping between rolls welded together typically using hot air gun or by special solvent & fixed mechanically to the roof deck.

For details, please refer to our installation guide.

- Ⓐ - INSUWRAP PVC WATERPROOFING MEMBRANE (1600 UV "S") ULTRA VIOLET RESISTANT
- Ⓑ - SEPARATION LAYER
- Ⓒ - THERMAL INSULATION
- Ⓓ - CONCRETE DECK
- Ⓔ - SCREW & WASHER FOR MECHANICAL FIXATION
- Ⓕ - HOT AIR WELDING
- Ⓖ - CONTACT ADHESIVE
- Ⓗ - ALUMINIUM FLASHING
- Ⓘ - SEALANT



VERTICAL PARAPET DETAIL

OUT STANDING FEATURES :

- * Easy to apply using hot air welding for joints.
- * Resistant to high temperature fluctuations.
- * Remain flexible throughout its life span and could be easily joined to new material after installation
- * High resistance to fire
- * Resistance to extreme weather conditions and UV Rays
- * Reinforced with high tenacity polyester mesh.

STORAGE :

Roll should be stacked horizontally and parallel to each other on a smooth surface.



MATERIAL PROPERTIES

1.60mm thick, Color : Grey, Ultra Violet Resistant to be used for Exposed Roofing System.

Test	ASTM (D 4434) Standard & Requirements (Results)	INS. PVC1600 UV "S"
Overall Thickness of PVC sheet, min, mm	1.60	1.60
Mass (Kg/m ²)		2.09
Tensile strength of break, min MPa (Psi): Machine -direction Cross-machine direction	10.4 (1500) 10.4 (1500)	>13.5 >13.5
Elongation at break, min, % Machine Direction Cross-machine direction	250 250	>360 >360
Seam strength, min,% of tensile or breaking strength	75	<82
Retention of properties after heat aging: Tensile strength,min,% of original Elongation,min,% of original	90 90	>90% >90%
Tear Resistance. Min,N (bf)	45.0 (10.0)	>90
Low temperature bend	Pass	Pass
Accelerated weathering test: Cracking (7 x magnification) Crazing (7 x magnification)	None None	None None
Linear dimensional change, max, %	0.1	<0.05
Change in weight after immersion in water, max, %	± 3.0	>±1.0
Static Puncture Resistance	Pass	Pass
Dynamic Puncture Resistance	Pass	Pass
Fire Class	ASTM E108	Pass (Class B)
Accelerated weathering test	ASTM G26	5000 hrs.

ROLL DIMENSIONS:

Roll length	20.0m
Roll width	2.1m
Weight / Roll(approx)	88.0 kg

A Member of **far** & Sons Group
**Waterproofing and Wrapping
Products Co. Ltd.**