

Since 1985

انسوراب
Insuwrap

Insuwrap PVC 2200 TNL - FB

PRODUCT DESCRIPTION :

Insuwrap PVC 2200 TNL - FB is a calendered high polymer waterproofing membrane. The membrane specially formulated for underground use, satisfying the highest international standards, offering high physical properties and long term durability for maximum protection against structure deterioration.

FIELD OF APPLICATION :

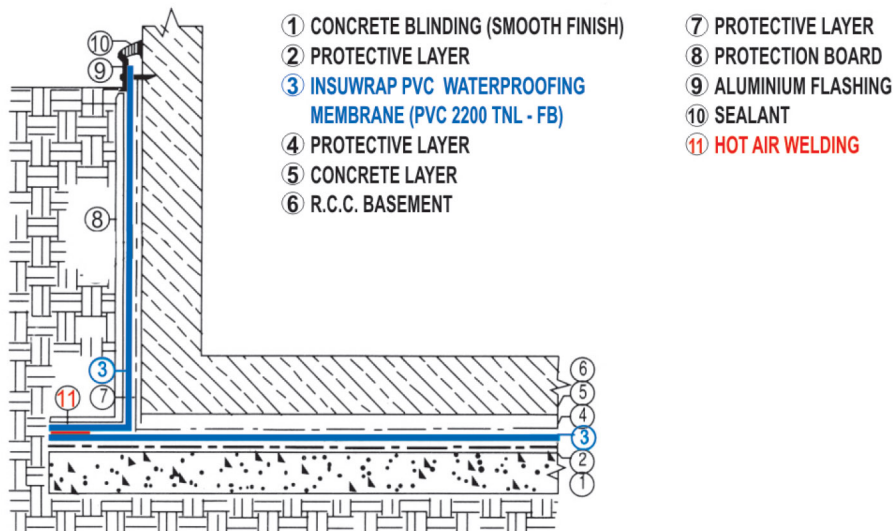
Underground Structures
Basements, Tunnels, Foundation of Bridges

METHOD OF APPLICATION

Horizontally : The rolls are laid over the clean smooth blinding concrete layer with 5 cm overlap welding together using hot air gun. Before applying the final concrete layer, the membrane should be extended in order to be joined with the vertical membrane later.

Vertically : The membrane is fixed fully adhered to the outside vertical wall before installing the protection board and back filling.

For details, please refer to our installation guide.



(BASEMENT DETAILING SECTION)

OUT STANDING FEATURES :

- * Easy to apply using hot air welding for joints.
- * Resistant to naturally occurring aggressive agents in ground water and soil.
- * Resistant to Acidic, Salty and Alkaline water.
- * High puncture resistance.

STORAGE :

Rolls should be stacked horizontally and parallel to each other on a smooth surface, protected from direct sun rays.



Since 1985

Insuwrap PVC 2200 TNL - FB

2.20mm thick, Fleeceback Liner for Underground Structures & Basement Tanking System

Material Properties INSUWRAP PVC 2200 TNL-FB

Test Performed	Test Method	INS. PVC 2200 TNL-FB
Thickness (mm)		2.20
Mass (Kg/m ²)		3.04
Tensile strength (N/mm ²)	ASTM - D638 DIN 16730	> 13.0
Elongation at break(%)	ASTM - D638 DIN 16730	> 310%
Tensile Modulus Perpendicular (Psi)	ASTM - D638 DIN 16730	1210
100% Modulus Machine Direction (Psi)	ASTM - D638 DIN 16730	730
100% Modulus Perpendicular Direction (Psi)	ASTM - D638 DIN 16730	730
Specific Gravity	ASTM - D792 DIN 16730	1.28
Hardness Shore A (3 Second)	ASTM - D224078 DIN 16730	80±1
Thermal stability (90°C-6 hrs)	Change Less than 2% -DIN 16730	< 0.7%
Tear strength (N)	80 N (Min) -DIN 16730	> 120N
Puncture resistance	Drop hammer 500gms, no leak on falling from 300 mm (DIN 16730)	Passed
Water vapour defusion resistance (μ)	Less than 30,000 (DIN 16730)	< 21,000
Compression Strength	SIA V 280/14	Passed
Impact Strength,mm	DIN 16726/5.12	>800
Cold bend	No cracks at -20°C (DIN 16730)	No cracks at -30° C
Resistance to Algea & Rot		High resistance

ROLL DIMENSIONS:

Roll length	20.0m
Roll width	2.10 m
Weight / Roll(approx)	128.0 Kg

A Member of **raf** & Sons Group
**Waterproofing and Wrapping
Products Co. Ltd.**